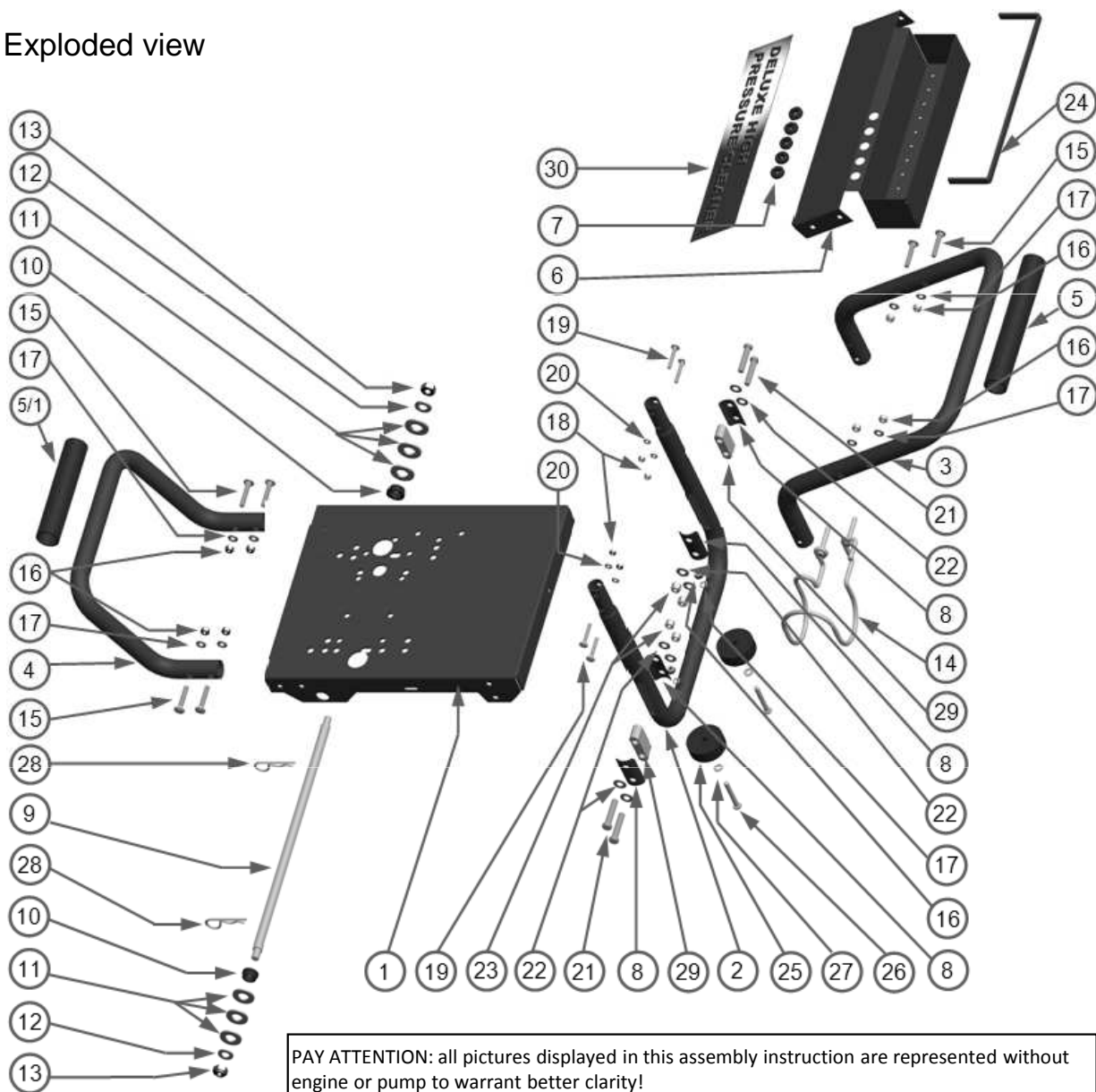


# ASSEMBLY INSTRUCTIONS FOR DELUXE H.P. CLEANER 389cc FRAME ASSEMBLY

Exploded view



PAY ATTENTION: all pictures displayed in this assembly instruction are represented without engine or pump to warrant better clarity!

Moreover, engine and pump are already assembled on the cart frame and don't need further instructions.

ITEM	CODE	DESCRIPTION	Q.TY
1	38.0134	BASE PLATE	1
2	38.0135	LOWER REAR LEG	1
3	38.0136	UPPER HANDLE	1
4	38.0137	FRONT HANDLE	1
5	39.0323	RUBBER GRIP L 270mm (10.63")	1
5/1	39.0324	RUBBER GRIP L 200mm (7.87")	1
6	38.0138	DISPLAY/NOZZLE PLATE	1
7	22.0102	NOZZLE HOLDER GROMMET	5
8	38.0139	FRONT LEG BOLT PLATE	4
9	38.0140	CART SHAFT	1
10	37.0255	PLASTIC AXLE GROMMET	2
11	38.0141	WASHER 17x34x3 (0.63"x1.34"x0.118")	6
12	38.0164	WASHER FOR SCREW M12 13x24x2.5 (0.51"x0.94"x0.098")	2
13	38.0165	SELF-LOCKING NUT M12	2
14	38.0143	WAND HOLDER	1
15	38.0144	CARRIAGE BOLT M8x50	6
16	38.0145	SELF-LOCKING NUT M8	10
17	38.0146	WASHER FOR SCREW M8 8.5x16.7x1.5 (0.33"x0.66"x0.06")	10
18	38.0147	SELF-LOCKING NUT M6	4
19	38.0148	CARRIAGE BOLT M6x40	4
20	38.0149	WASHER FOR SCREW M6 6.5x12.6x1.4 (0.26"x0.5"x0.06")	4
21	38.0150	SCREW HEX HEAD M10x55	4
22	38.0151	WASHER FOR SCREW M10 10.5x20.8x1.4 (0.41"x0.82"x0.06")	8
23	38.0152	SELF-LOCKING NUT M10	4
24	39.0325	RUBBER PROTECTION	1
25	37.0263	RUBBER FOOT	2
26	38.0157	SCREW HEX HEAD M8x60	2
27	38.0167	WASHER FOR SCREW M8 8.5x24.9x2 (0.33"x0.98"x0.08")	2
28	38.0174	SPLIT PIN	2
29	38.0185	CART SPACER	2
30	39.0345	LABEL FOR DISPLAY/NOZZLE PLATE	1



---

**DO NOT TAKE BACK TO STORE**

---

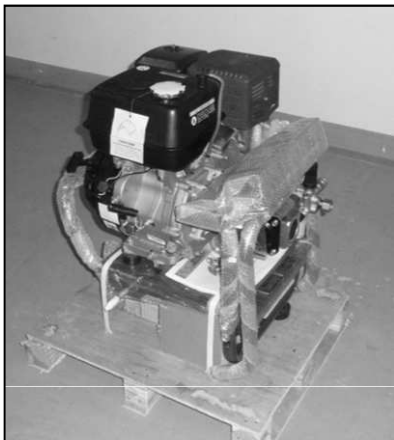
Customer Service Technicians are available to provide assistance.

If a part is damaged or missing, replacement parts can be shipped from our facility. Please call our toll-free number: 1-866-393-3968.

---

**Customer Service      1-866-393-3968**

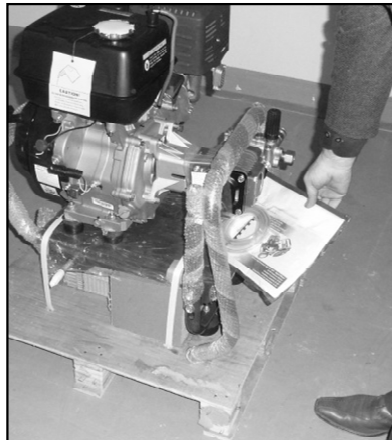
# ASSEMBLY INSTRUCTIONS FOR DELUXE H.P. CLEANER 389cc FRAME ASSEMBLY



1: Unpack the box and remove the plastic bag.



2:: Remove the display/nozzle plate assembly (pos. 6+ (5x)7 + 24+30).



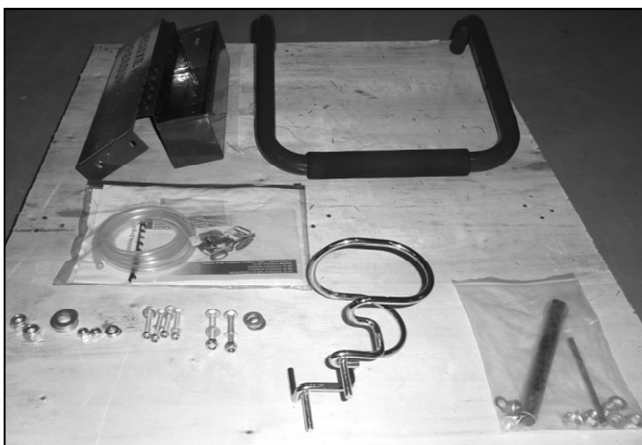
3: Remove the documents bag.



4: Remove the upper handle assembly (pos.3+5).



5: Remove the accessories bag.



6: Unpack all components previously removed.



7: Insert 2 or 3 washers (pos.11), according to the hub of your wheels, on the shaft (pos.9). The same must be made on the opposite side.



8: Insert your wheel on the shaft (pos.9); then insert the washer (pos.12), the M12 self-locking nut (pos.13) and tighten using a 19mm hex wrench. The same must be made on the opposite side.



9: Assemble the upper handle assembly (pos.3+5) on the lower rear leg (pos.2).

# ASSEMBLY INSTRUCTIONS FOR DELUXE H.P. CLEANER 389cc FRAME ASSEMBLY



10: Fix the upper handle assembly (pos.3+5) using N.4 carriage bolts M6x40 (pos.19), N.4 washers for M6 screw (pos.20) and N.4 M6 self-locking nuts (pos.18). Then tighten using a 10mm hex wrench.



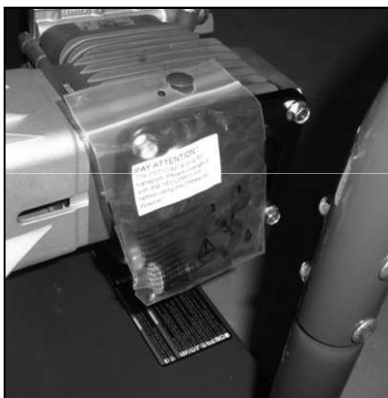
11: Assemble the display/nozzle plate assembly (pos. 6+(5x)7+24+30) on the upper handle (pos.3), using N.2 carriage bolts M8x50 (pos.15), N.2 washers for M8 screw (pos.17 and N.2 M8 self-locking nuts; then tighten on the right side (having the engine in front of you) using a 13mm hex wrench.



12: Assemble the wand holder (pos.14) on the left side (having the engine in front of you) of the displaynozzle plate previously assembled, using N.2 washers for M8 screw (pos.17) and N.2 M8 self-locking nuts. Then tighten using a 13mm hex wrench.



13: With the help of somebody, remove the frame assembly from the bottom plate.



14: Remove the plastic bag and the red cap from the engine crankcase.



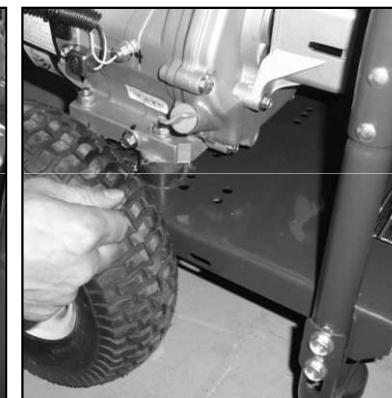
15: After checked the oil level, screw the yellow cap contained in the plastic bag previously removed.



16: Unscrew the engine crankcase oil cap.



17: Fill the engine crankcase with oil (please refer to the engine manual also for this operation).

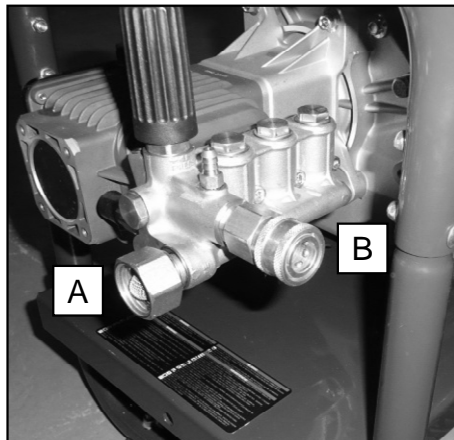


18: Replace the engine crankcase oil cap.

# ASSEMBLY INSTRUCTIONS FOR DELUXE H.P. CLEANER 389cc FRAME ASSEMBLY



19: Remove the engine tank cap and fill with gasoline the tank; then replace the tank cap.



20: Connect your water source to the inlet of the pump (A), and connect your high-pressure hose to the outlet of the pump (B).



21: Put the engine stop switch to the ON position.



22: open the engine gasoline throttle switch (gasoline valve) and adjust the engine choke (nearly or totally close). Then adjust the governor at the minimum to middle position.



23: Start the engine pulling the recoil starting handle; after starting gently open the choke and adjust the governor at minimum speed position, looking for a smoothly functioning.



Your Deluxe H.P.Cleaner 13HP is now running and ready to use.